

PFMConnect Blog

Improving public financial management globally

<http://blog-pfmconnect.com>

Madagascar Public Financial Management Profile



16 April 2016

Introduction

This note presents a series of charts which provide an overview of Madagascar's recent public financial management (PFM) performance based on this country's 2014 Public Expenditure and Financial Accountability (PEFA) assessment. Comparisons are made between Madagascar's performance and the performance of the other twenty-three countries that had PEFA assessments published in 2014-2015. All analyses have been prepared using results reported from using the 2011 PEFA methodology.

Overall PFM performance

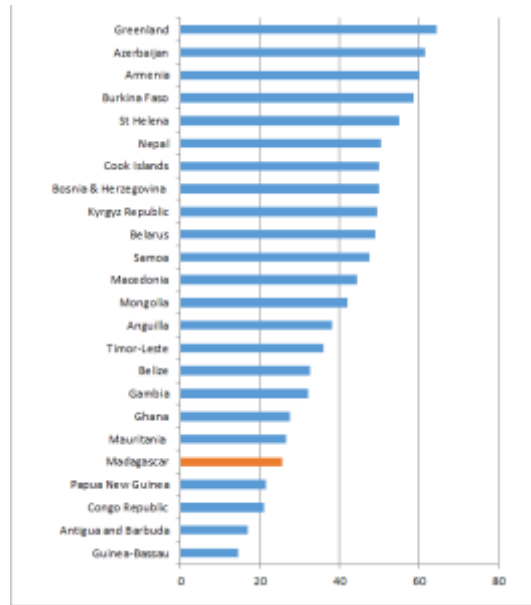
Individual country PFM performance has been determined by applying the following points scale to reported individual performance indicator (PI) scores as presented in Table 1. No points were allocated to PIs that were not scored because either data was unavailable, a D score was given or the PI was not applicable.

Table 1: PI scoring methodology

PEFA PI score	Points allocated
A	3
B+	2.5
B	2
C+	1.5
C	1
D+	.5
D	0

The graph in Figure 1 below shows Madagascar's overall score was ranked twentieth out of the twenty-four countries.

Figure 1: Aggregate PEFA scores for 24 countries



Download a png version of Figure 1 [here](#) (Madagascar overall result) to review the overall scores of Madagascar and the twenty-three other countries in more detail.

Details of the distribution of overall country scores across PFM performance categories, as determined by PFMConnect, are presented in Table 2. Madagascar's overall score was 25.5 points.

Table 2: Distribution of country PFM performance levels

PFM performance	Overall Scores	Number of countries
Very strong	66.37-84	0
Strong	49.57-66.36	8
Moderate	32.77-49.56	7
Weak	15.97-32.76	8
Very weak	0-15.96	1
Total		24

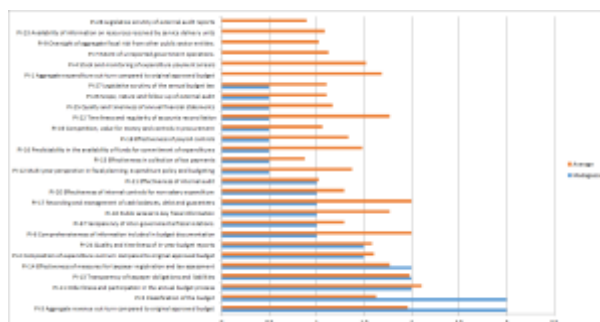
Madagascar's overall PFM performance is classified as "weak".

PI performance

The graph in Figure 2 below shows the scores for Madagascar individual PIs compared with the average score recorded for each PI across the twenty-four PEFA assessments we have

studied. Please note that no score was recorded for the top six indicators in Figure 2 as one indicator (PI-4) was not assessed and five indicators (PI-1, PI-7, PI-9, PI-23, and PI-28) received D scores.

Figure 2: Madagascar PI score comparisons



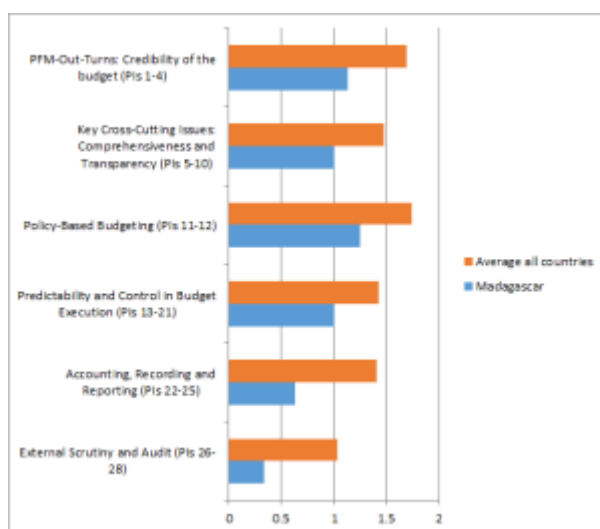
Download a pdf version of Figure 2 [here](#) (Madagascar PIs) to review individual PI scores in more detail.

Twenty-seven PIs were assessed. Four PIs had scores above the country average whilst twenty-three PIs had scores below the country average.

Performance across key PFM activities

The graph in Figure 3 below shows the average scores for the six key PFM activities compared with the average score recorded for these activities across the twenty-four country PEFA assessments we have studied.

Figure 3: Madagascar key PFM activity comparisons



All six key PFM activities recorded scores below the country average. Download a png version of Figure 3 [here](#) (Madagascar key PFM activities) to review these scores in more detail.

PEFA ASSESSMENT

You can download the 2014 PEFA assessment for Madagascar [here](#).

[Download pdf](#)

TAGS

[2011](#), [2014](#), [activities](#), [aggregate](#), [assessment](#), [categories](#), [chart](#), [comparison](#), [countries](#),[country](#),
[distribution](#), [indicator](#), [key](#), [level](#), [Madagascar](#), [methodology](#), [overall](#), [overview](#),[performance](#),
[PFM](#), [PI](#), [profile](#), [public expenditure and financial accountability](#), [rank](#), [score](#)